



# MONTHLY MEMBERSHIP PROGRESS REPORT

District 11 C2

Results as of: 2/29/2016

GMT: THOMAS MATNEY

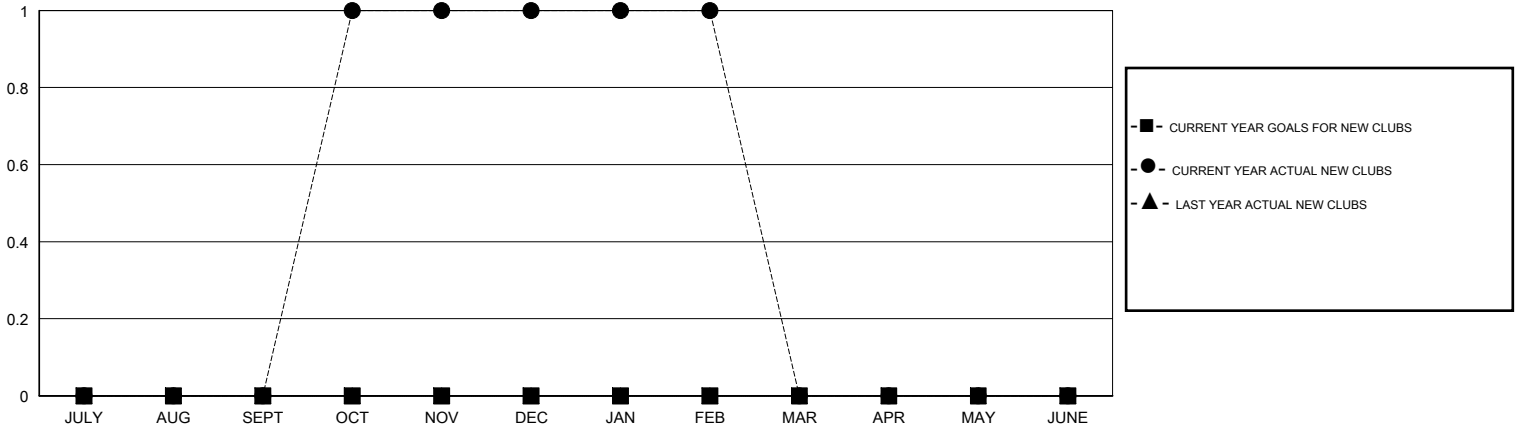
LOCATION MICHIGAN

GMT CA 1

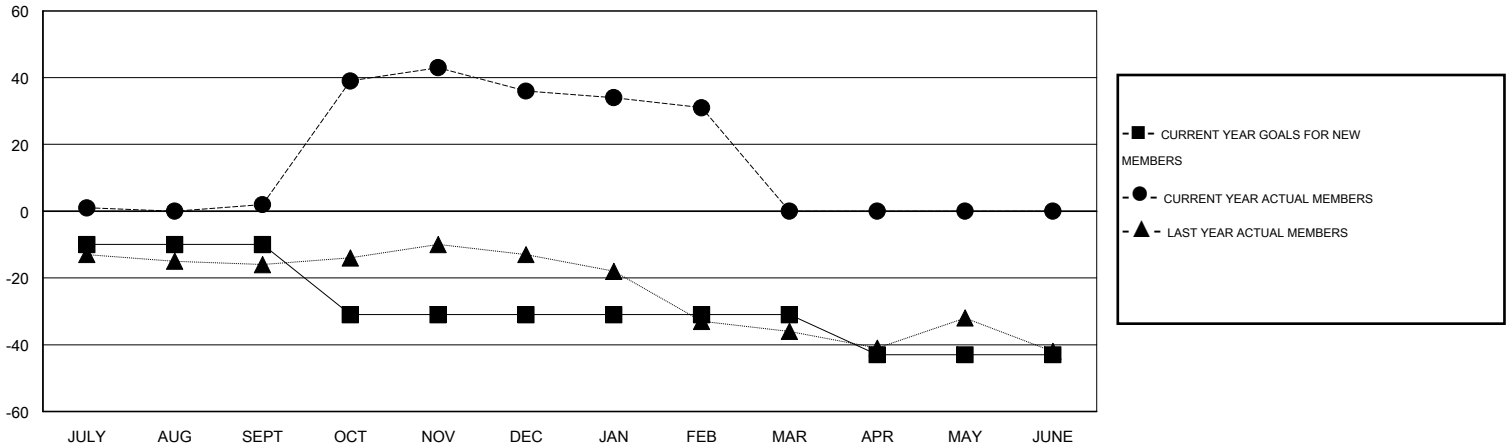
Clubs				
RESULTS FOR 2015-2016				
QUARTER	NEW CLUB GOAL	NEW CLUBS	DROPPED CLUBS	NET GAIN/LOSS
JULY/AUG/SEPT	0	0	0	0
OCT/NOV/DEC	0	1	0	1
JAN/FEB/MAR	0	0	0	0
APR/MAY/JUNE	0	0	0	0

Members				
RESULTS FOR 2015-2016				
QUARTER	NEW MEMBER GOAL	CHARTER AND NEW MEMBERS ADDED	DROPPED MEMBERS	NET GAIN/LOSS
JULY/AUG/SEPT	-10	14	12	2
OCT/NOV/DEC	-21	47	13	34
JAN/FEB/MAR	0	20	25	-5
APR/MAY/JUNE	-12	0	0	0

GOALS AND ACTUAL NEW CLUBS CUMULATIVE



GOALS AND ACTUAL MEMBERS CUMULATIVE



DROPPED CLUBS: 0	23 CLUBS OF 36 ADDED 1 OR MORE NEW MEMBERS	<u>GENDER DISTRIBUTION</u>	
<u>DROPPED MEMBERS</u>		MALE	655 (73.68%)
DECEASED	7	FEMALE	234 (26.32%)
CLUB CANCELLED	0	<u>FAMILY UNIT MEMBERS</u> 152	
OTHER	43	<u>HEAD OF HOUSEHOLD</u> 74	
TOTAL	50	<u>NON-HEAD OF HOUSEHOLD</u> 78	

[CLICK HERE FOR HEALTH ASSESSMENT DATA](#)